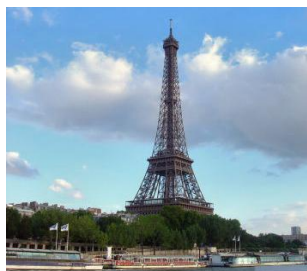




**sure** *travkor*  
corporate

*YET ANOTHER SUCCESSFUL EDENGLLEN TOUR!!*  
**EDENGLLEN HIGH SCHOOL**  
**EURO TOUR 2011**

Details of accommodation, flights and trains have been omitted for safety reasons. A full copy of this itinerary is available for travellers only, from Mrs Von Ruben, Tour Organiser, or Mr Nelson Assistant Tour Leader.



**Saturday 26 March 2011**

**JOHANNESBURG – PARIS**

- 17:00 Report to the Air France check in counters at OR Tambo International Airport, Johannesburg  
Luggage to be checked through to London. You will be given both boarding passes on check in.
- 20:20 Depart Johannesburg on Air France

**Sunday 27 March**

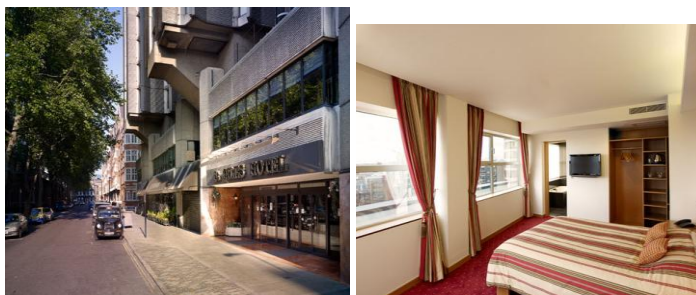
**PARIS - LONDON**

- 06:55 Arrive at Charles de Gaulle Airport, Paris. **Terminal 2E**. Proceed to check in for flight to London. (London flight departs from the same **Terminal 2 E**).
- 10:05 Depart Paris on Air France
- 10:25 Arrive Heathrow Airport, London.

**You will be met on arrival by your guide and escorted to your private coach. The coach will transfer you into London for a tour of the West End prior to dropping you off at the hotel.**

### **West End Tour**

Enjoy a tour of London commencing in the West End the tour passes by Buckingham Palace including the changing of the guard (if held), Downing Street, Westminster Abbey, Houses of Parliament, Big Ben, and Piccadilly Circus.



One of the most central hotels in the west end of London, the Hotel is situated in Bloomsbury near the junction of Tottenham Court Road and Oxford Street. Within walking distance to London's shopping areas, tourist attractions and theatres.

### **LOCATION**

- Less than one minute from Tottenham Court Road Station (servicing the Northern and Central Lines on the London Underground tube network)
- Euston Station – 1 mile
- Kings Cross St Pancras International Station – 1.3 miles

Dinner in a local restaurant within walking distance of the hotel.

## **Monday 28 March LONDON**

Breakfast (continental) at the hotel.

08:00 Meet your guide and private coach for a **full day tour** with a pass that includes admissions to the London Dungeon, London Eye and Madame Tussaud's.

Dinner at a local restaurant..  
Jack the Ripper Tour or similar

## **Tuesday 29 March LONDON - PARIS**

Breakfast (continental) at the hotel.

Transfer from the hotel to the St. Pancras International train station.

08:55 Depart on the Eurostar train to Paris

12:17 Arrive Paris at Gare du Nord Station.

You will be met by your guide and proceed immediately on a half day panoramic tour of Paris including a visit to the Eiffel Tower with an elevation to the 2<sup>nd</sup> level.

The Hotel is located in south-eastern Paris, in the 13th district, half way between the Bercy left bank modern district, the François Mitterand National Library and the chinese quarter. The hotel offers 93 comfortable, spacious rooms, with flat-screen TV, quilt and bathroom with hair dryer.



18:30 Meet in the lobby for transfer by private coach to Montmartre.

19:15 **Dinner at Bistro Montmartre** (3 course dinner with one soft drink per person included)

20:45 Proceed by coach to the River Seine for embarkation on the Bateaux Parisiens.

21:30 Enjoy a 1 hour cruise of the River Seine and view Paris by night!

22:30 Proceed with coach to take in more of the illumination of Paris.

23:30 Return to hotel.

**Wednesday 30 March**

**PARIS**

Breakfast at the hotel

09:00 Pick up at hotel. Proceed by coach to Disneyland Paris. You will each have a 1 day entrance ticket for 2 Parks.

***Even better than you dreamt it would be..***

Come and journey into the world of imagination and explore 5 themed lands. Discover the Disney characters and let yourself be transported away by the adventures, discovery and magic. In Disneyland Park, it's like dreaming with your eyes wide open".

19:00 Meet your coach for return transfer to hotel.

Evening at Leisure. You will accompany your teachers this evening to explore Paris by night!

**Thursday 31 March PARIS - INTERLAKEN OEST**

Breakfast at the hotel. Check out of the hotel and place your luggage in the coach. Please ensure that you settle any extras incurred prior to departure.

09:00 Meet your guide in the lobby and proceed by private coach for visit to the Louvre.

Group reservation of the Louvre. After the tour proceed by coach to the train station.

14:24 Train departs **Paris Est Station** via Basle to Interlaken Oest. You will enjoy some wonderful scenery en route.

Arrival in Basle change trains.

Train departs Basle to Interlaken Oest

20:28 Arrival Interlaken Oest .

Proceed on foot to hotel .

Accommodation :



This hotel is fairly central, only a few minutes walk from the main shopping area. The rear of the hotel overlooks the river and the front faces the famous Jungfrau peak. The building has elegant, spacious rooms, some with access to a huge terrace and all are beautifully decorated in white and pastels, with large bright bathrooms

Enjoy a late dinner at the hotel (3 courses no drinks)

**Friday 1 April INTERLAKEN OEST – JUNGFRAU – INTERLAKEN OEST**

Breakfast at the hotel

Full day excursion to the highest point in Europe, Jungfrau with guide



A short walk to the station to embark on an exciting full day visit on Alpine Railway via Grindelwald, Kleine Scheidigg to the roof of Europe – Jungfrauoch

One of the most popular trips is to the "Jungfrauoch". The train leaves Lauterbrunnen, travels through Wengen and up to Kleine Scheidegg and then continues up to the highest railway station in Europe.

"Top of Europe" offers fantastic views of the Aletsch-Glaciers ice-lake along with the mountain peaks of neighbouring countries. Visit the fascinating "Ice Palace" and in summer the husky dogs and ski and snowboard park.

**Schedule:**

**07:05 Depart Interlaken Oest**

**07:25 Arrive Lauterbrunnen**

**07:39 Departure**

**08:24 Arrive Kleine Scheidegg**

**08:30 Departure**

**09:22 Arrive Jungfrauoch**

**After traveling through the tunnel excavated at the turn of the previous century by cog-wheel train you will arrive at the observation pavilion surrounded by glaciers, visit the Ice Palace, the Ice gateway, the Plateau and the Sphinx Terrace.**

**12:30 Departure**

**13:20 Arrive Kleine Scheidegg**

**13:33 Departure**

**14:12 Arrive Grindelwald**

**14:19 Departure**

**14:54 Arrive Interlaken Oest**

**19:30 This evening, walk to the nearby Kursaal to enjoy a traditional Swiss mea of Cheese Fondue followed by a Folklore Show, participation is welcome!**

**Saturday 2 April INTERLAKEN – VENICE**

Early breakfast at the hotel.

**07:00** Depart by private coach transfer from Interlaken Oest to Venice Mestre. The distance is approximately 500 kms and the trip will take an anticipated 6 hrs and 30 minutes. On arrival at the hotel the group will check in and proceed on a half day sightseeing tour of Venice. Alternatively the train operates as follows:

**08:01 Departs Interlaken Oest ( Changes in Spiez and Brig)**

**14:40 Arrival Venice**

All rooms have private facilities, TV, heating, air conditioning and hair dryers

**14:15** Meet in lobby and depart by coach to the P. Le Roma bus terminal for departure by boat to Venice island.. Meet up with your guide who will escort you on a walking tour of Venice.

**Venice with St Mark Basilica and the Glass Factory**



Visit of St. Mark's Square with an explanation of the monuments surrounding it. Proceed to the interior of St. Mark's Basilica, famous for its Byzantine and Gothic design and for the richness of its mosaics, marbles and precious sculpture. Afterwards visit the Old Prisons and

the Bridge of Sighs. During the course of the tour a visit will be made to the glass blowing works of Murano.

19:00 Dinner at a local restaurant on the island (four course meal, drinks not included)



21:00 Meet at rendezvous point to depart Venice Island for return transfer by boat and coach to your hotel.

### Sunday 3 April VENICE – FLORENCE

Breakfast at the hotel.

08:30 Long distance transfer from Venice Mestre to Florence (direct) – about 4 hour trip. Arrive in Florence and transfer to the hotel.



**The Hotel** is a 3 star hotel located in the heart of Florence, only a few minutes walk from all tourist major attractions such as the Ponte Vecchio, Uffizi Gallery, Michelangelo's David and the Cathedral (Duomo). Hotel provides 62 charming and well appointed bedrooms equipped with every modern facilities you expect such, colour TV with satellite channels, direct dial telephone, hairdryer, air conditioning. Amongst the facilities provided for the convenience of guests are: internet point, porter, Currency Exchange, Laundry Cleaning Service, room service.

15:00 Proceed on a city tour of Florence.  
Each participant will have headphones throughout the tour.  
The tour will include a visit to the Cathedral of Santa Maria Del Fiore with its magnificent dome by Brunelleschi, the Campanile, the Baptistery with its famous doors, the Ponte Vecchio. During the visit there will be a visit to the Uffizi Gallery

#### **UFFIZI GALLERY**

Proceed with your teachers to the gallery as early as possible to avoid the queues

This is one of the most famous museums of paintings and sculpture in the world. Its collection of Primitive and Renaissance paintings comprises several universally acclaimed masterpieces of all time, including works by Giotto, Simone Martini, Piero della Francesca, Fra Angelico, Filippo Lippi, Botticelli, Mantegna, Correggio, Leonardo da Vinci, Raphael, Michelangelo and Caravaggio. German, Dutch and Flemish masters are also well represented with important works by Dürer, Rembrandt and Rubens.

The Uffizi Gallery occupies the top floor of the large building erected by Giorgio Vasari between 1560 and 1580 to house the administrative offices of the Tuscan State. The Gallery was created by Grand-duke Francesco I and subsequently enriched by various members of the Medici family, who were great collectors of paintings, sculpture and works of art. The collection was rearranged and enlarged by the Lorraine Grand-dukes, who succeeded the Medici, and finally by the Italian State.



19:30 Dinner at a restaurant

#### **Monday 4 April FLORENCE - ROME**

Breakfast at the hotel

Depart by private coach for Rome enjoying a drive through the Italian countryside. En route to Rome the coach will make a detour to the town of Pisa. The coach will stop at the bus terminal in Pisa where you will proceed on the public shuttle bus to the city centre to view the famous Leaning Tower of Pisa. ( no guide)  
You will have free time for lunch.



On arrival at the hotel check in.

The Hotel is hotel located in the historical centre of Rome close to the Basilica of Santa Maria Maggiore and the central train station. Every morning breakfast is served in the breakfast room. The hotel also offers a bar and dining room, room service concierge service and tour arrangement airport transfers and 24-hour front desk service. All rooms are furnished with private baths TVs direct-dial phones hairdryers and safes

19:30 Dinner at a local trattoria

#### **Tuesday 5 April ROME**

Breakfast at the hotel.

08:00 Meet in the lobby for departure by private coach and guide and transfer to the Vatican City for a visit of the Vatican Museums, Sistine Chapel and St Peter's Cathedral.  
This tour will include all the highlights of ancient Rome: The Colosseum and Forum will be viewed from the outside.



19:30 Dinner at a local restaurant

**Wednesday 6 April ROME**

Breakfast at the hotel

At leisure

15:00 Meet in the lobby for transfer to the airport.

18:55 Depart Leonardo da Vinci – Fiumicino Airport on Air France. Luggage will be checked through to Johannesburg. Collect both boarding passes.

21:05 Arrive at Charles de Gaulle Airport, Paris

23:20 Depart Paris on Air France

**Thursday 7 April JOHANNESBURG**

09:45 Arrive at O R Tambo International Airport, Johannesburg.

***BON VOYAGE***